



SIZE - XL
READYMAD
#R-1020-A



TOP- ORGENZA WORK WITH EMBROIDERY
BOTTOM- SILK STICHED
DUPATTA - ORGENZA WORK WITH EMBROIDERY

- Ⓟ DRY CLEAN ONLY.
- ⓧ DO NOT USE ANY BLEACH OR STAIN REMOVING CHEMICAL.
- ☎ IRON THE FABRIC AT MODERATE TEMPERATURE.





SIZE - XL
READYMAD
#R-1020-B



TOP- ORGENZA WORK WITH EMBROIDERY
BOTTOM- SILK STICHED
DUPATTA - ORGENZA WORK WITH EMBROIDERY

- Ⓟ DRY CLEAN ONLY.
- ⓧ DO NOT USE ANY BLEACH OR STAIN REMOVING CHEMICAL.
- ☐ IRON THE FABRIC AT MODERATE TEMPERATURE.





Ramsha
SIZE - XL
READYMADE
#R-1020-B

TOP - ORGANDA WITH EMBROIDERY
BOTTOM - SEA FUCHSIA
DRESSES - ORGANDA WITH EMBROIDERY

• AVAILABLE ONLY
IN NEW DELHI AND BLENDING
WITH THE COLOR OF THE



SIZE - XL
READYMAD
#R-1020-C



TOP- ORGENZA WORK WITH EMBROIDERY
BOTTOM- SILK STICHED
DUPATTA - ORGENZA WORK WITH EMBROIDERY

- Ⓟ DRY CLEAN ONLY.
- ⓧ DO NOT USE ANY BLEACH OR STAIN REMOVING CHEMICAL.
- ☎ IRON THE FABRIC AT MODERATE TEMPERATURE.



Ramshe
SIZE - XL
READYMADE
#R-1020-C

Handmade with 100% Embroidery
100% Cotton Fabric
100% Polyester Lining with Embroidery

Washable
Dry Clean Only
Do Not Iron
Do Not Bleach

Model is wearing size XL

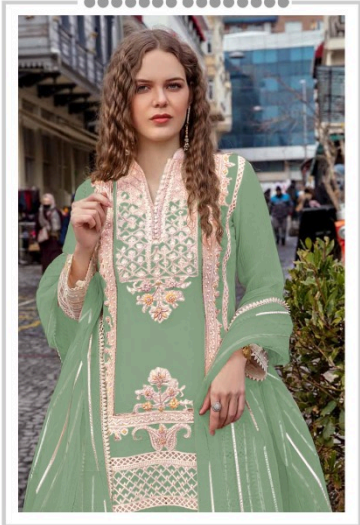


Ramska
SIZE - XL
READYMADE
#R-1020-A

100% POLYESTER WITH EMBROIDERY
100% COTTON WITH EMBROIDERY
100% COTTON WITH EMBROIDERY

100% POLYESTER WITH EMBROIDERY
100% COTTON WITH EMBROIDERY
100% COTTON WITH EMBROIDERY

Ramsha[®]
1020-NX



SIZE - XL
READYMAD

Ramsha[®]
1020-NX



#R-1020-A



#R-1020-B



#R-1020-C



#R-1020-D



SIZE - XL
READYMAD
#R-1020-D



TOP- ORGENZA WORK WITH EMBROIDERY
BOTTOM- SILK STICHED
DUPATTA - ORGENZA WORK WITH EMBROIDERY

- Ⓟ DRY CLEAN ONLY.
- ⓧ DO NOT USE ANY BLEACH OR STAIN REMOVING CHEMICAL.
- ☎ IRON THE FABRIC AT MODERATE TEMPERATURE.

