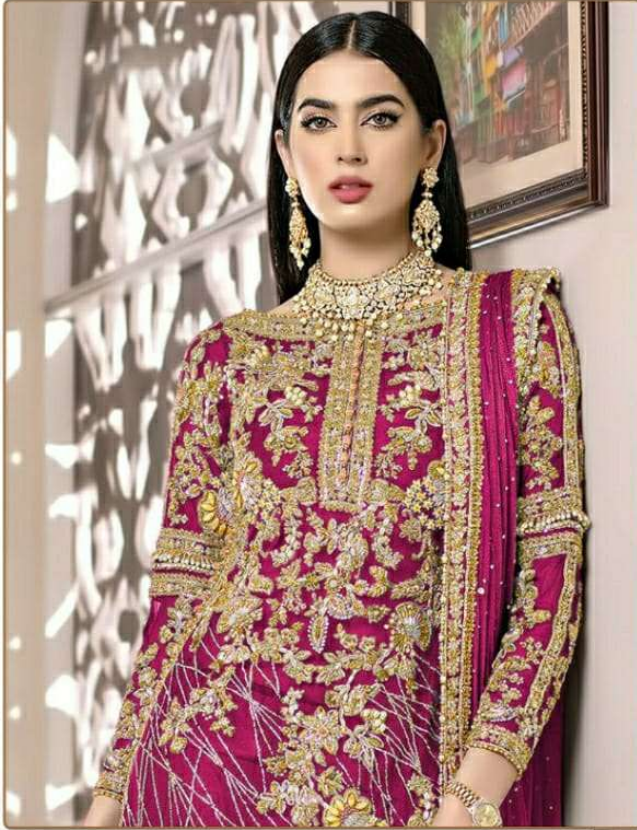




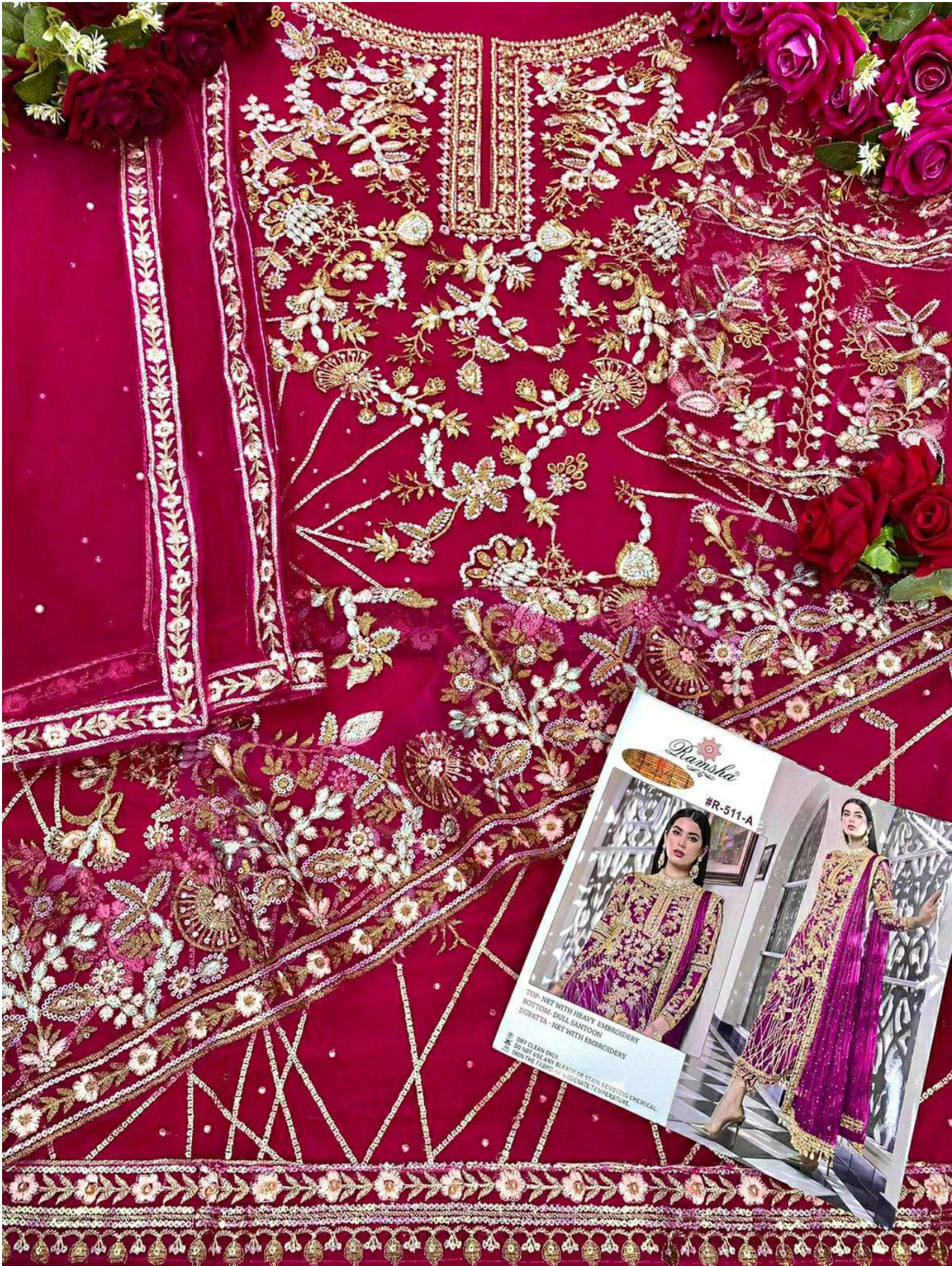
#R-511-A



TOP- NET WITH HEAVY EMBROIDERY
BOTTOM- DULL SANTOON
DUPATTA - NET WITH EMBROIDERY

- Ⓟ DRY CLEAN ONLY.
- ✘ DO NOT USE ANY BLEACH OR STAIN REMOVING CHEMICAL.
- ☎ IRON THE FABRIC AT MODERATE TEMPERATURE.





Ramsha
#R-511-A

TOP - NET WITH HEAVY EMBROIDERY
BOTTOM - DULL SANTOON
DOPATTA - NET WITH EMBROIDERY

Ⓢ DRY CLEAN ONLY
Ⓢ DO NOT USE ANY BLEACH OR STAIN REMOVING CHEMICAL
Ⓢ WASH THE FABRIC AT HIGHER TEMPERATURE



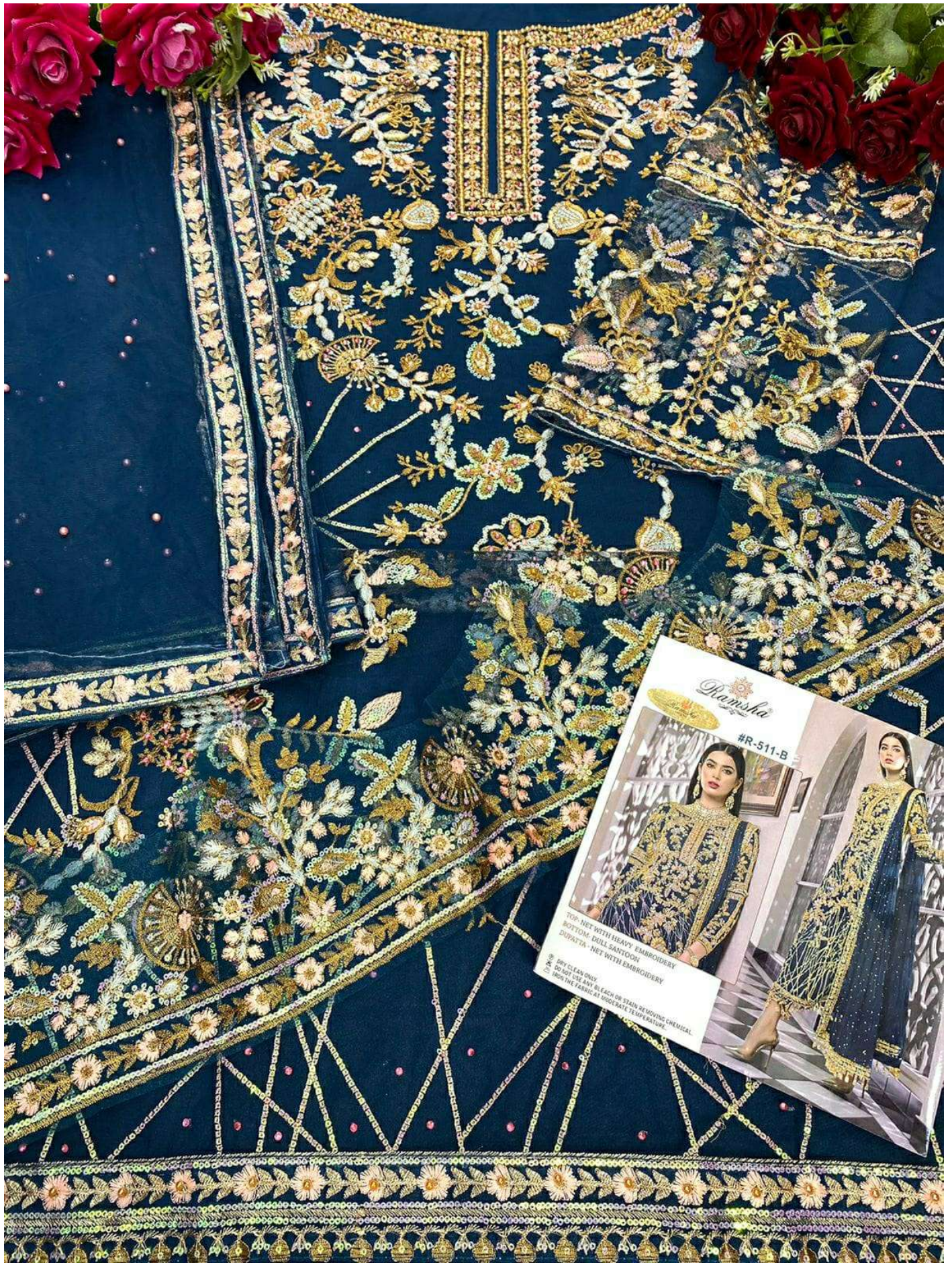
#R-511-B



TOP- NET WITH HEAVY EMBROIDERY
BOTTOM- DULL SANTOON
DUPATTA - NET WITH EMBROIDERY

- Ⓟ DRY CLEAN ONLY.
- ✂ DO NOT USE ANY BLEACH OR STAIN REMOVING CHEMICAL.
- ☎ IRON THE FABRIC AT MODERATE TEMPERATURE.





Damska
#R-511-B

TOP: NET WITH HEAVY EMBROIDERY
BOTTOM: DULL SATOON
DUPATTA - NET WITH EMBROIDERY

● DRY CLEAN ONLY
● DO NOT USE ANY BLEACH OR STAIN REMOVING CHEMICAL
● IRON THE FABRIC AT MODERATE TEMPERATURE.



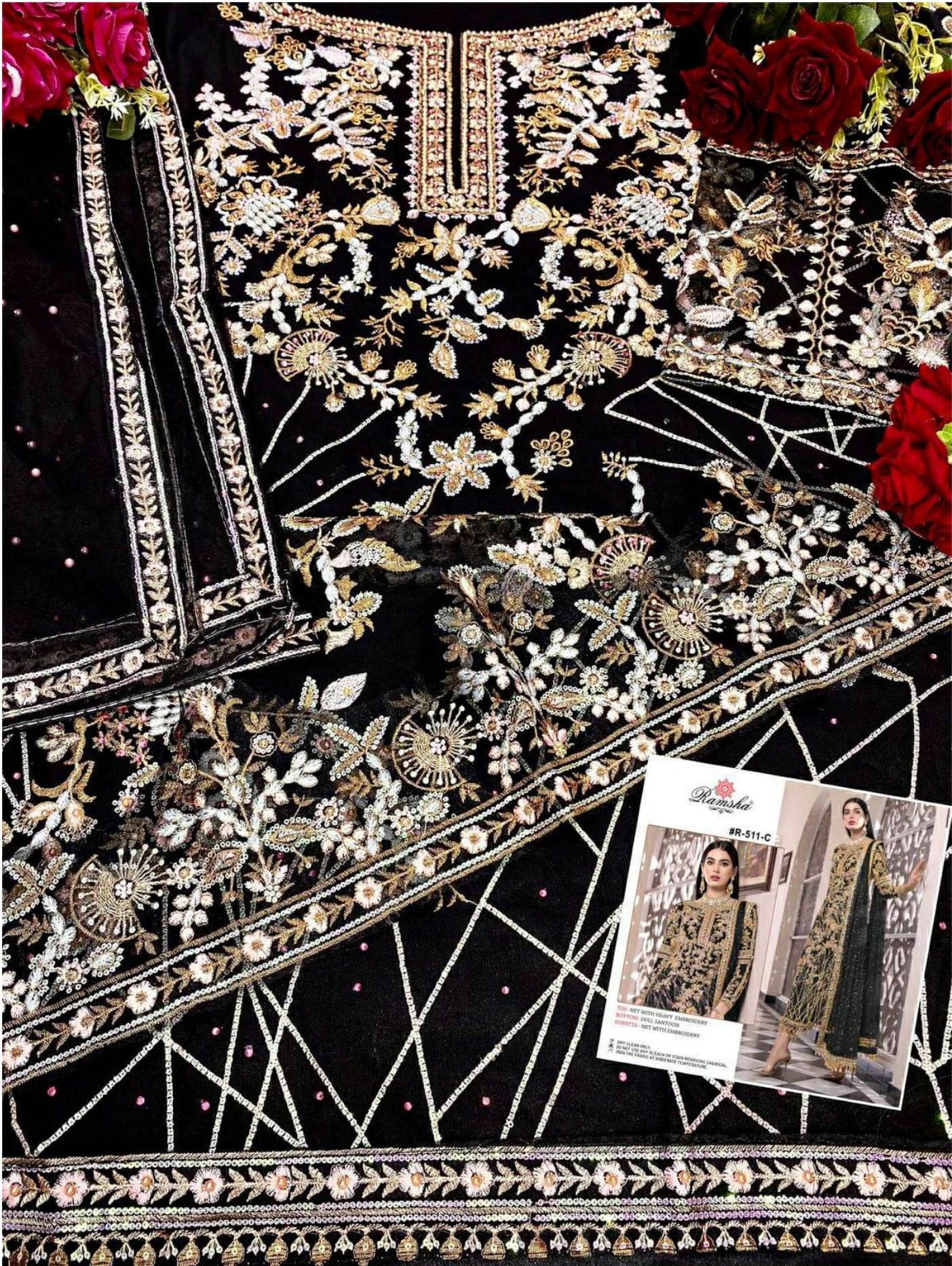
#R-511-C



TOP- NET WITH HEAVY EMBROIDERY
BOTTOM- DULL SANTOON
DUPATTA - NET WITH EMBROIDERY

- Ⓟ DRY CLEAN ONLY.
- ✂ DO NOT USE ANY BLEACH OR STAIN REMOVING CHEMICAL.
- ☎ IRON THE FABRIC AT MODERATE TEMPERATURE.





Ramsla
#R-511-C

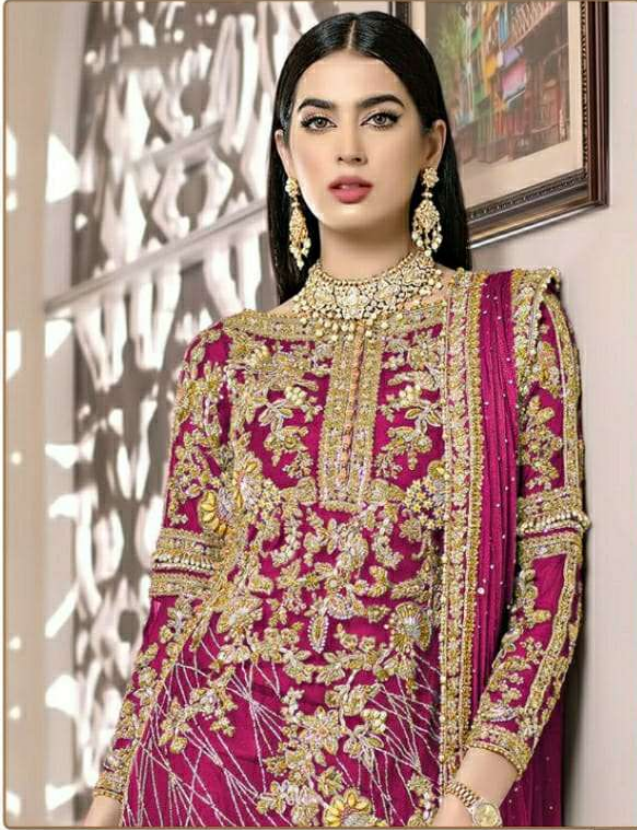
TOP- NET WITH HEAVY EMBROIDERY
SUPPORTS OVER SHIRT/CAMISOLE
SHIRT/SA- NET WITH EMBROIDERY

● DRY CLEAN ONLY
● DO NOT USE IRON
● CLEAN OR STAIN REMOVING CHEMICAL
● WASH THE FABRIC AT MODERATE TEMPERATURE





#R-511-A



TOP- NET WITH HEAVY EMBROIDERY
BOTTOM- DULL SANTOON
DUPATTA - NET WITH EMBROIDERY

- Ⓟ DRY CLEAN ONLY.
- ✘ DO NOT USE ANY BLEACH OR STAIN REMOVING CHEMICAL.
- ☎ IRON THE FABRIC AT MODERATE TEMPERATURE.

