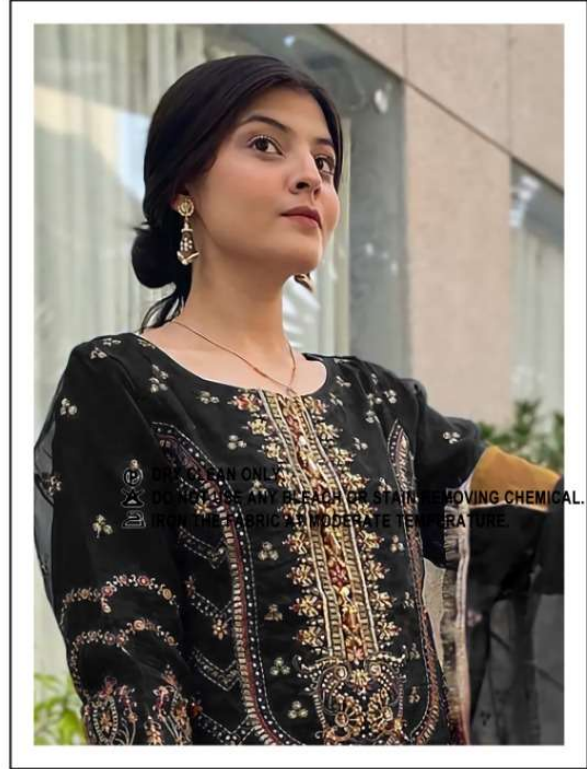




D.NO.170-B

FABRIC DETAILS

- TOP-** HEAVY DAL ORGANZA WITH EMBROIDERY WORK WITH DIMAND MOTI
- BOTTOM/INNER-** SANTOON WITH WORK
- DUPATTA/NET-** HEAVY DAL ORGANZA WITH EMBROIDERY WORK WITH FANCY LESS



D.NO.170-A

FABRIC DETAILS

TOP- HEAVY DAL ORGANZA WITH EMBROIDERY WORK WITH DIMAND MOTI

BOTTOM/INNER- SANTOON WITH WORK

DUPATTA/NET- HEAVY DAL ORGANZA WITH EMBROIDERY WORK WITH FANCY LESS



D.NO.170-B

FABRIC DETAILS

- TOP-** HEAVY DAL ORGANZA WITH EMBROIDERY WORK WITH DIMAND MOTI
- BOTTOM/INNER-** SANTOON WITH WORK
- DUPATTA/NET-** HEAVY DAL ORGANZA WITH EMBROIDERY WORK WITH FANCY LESS



D.NO.170-C

FABRIC DETAILS

- TOP-** HEAVY DAL ORGANZA WITH EMBROIDERY WORK WITH DIMAND MOTI
- BOTTOM/INNER-** SANTOON WITH WORK
- DUPATTA/NET-** HEAVY DAL ORGANZA WITH EMBROIDERY WORK WITH FANCY LESS



D.NO.170-A



D.NO.170-B



D.NO.170-C



:TOP:

HEAVY DAL ORGANZA WITH EMBROIDERY
WORK WITH DIMAND MOTI.

:BOTTAMI/INNER:

SANTOON WITH WORK.

:DUPATTA/NET:

HEAVY DAL ORGANZA WITH EMBROIDERY
WORK WITH FANCY LESS.



D.NO.170-B

FABRIC DETAILS

TOP- HEAVY DAL ORGANZA WITH EMBROIDERY WORK WITH DIMAND MOTI

BOTTOM/INNER- SANTOON WITH WORK

DUPATTA/NET- HEAVY DAL ORGANZA WITH EMBROIDERY WORK WITH FANCY LESS