



READYMAD
#R-1035-C



TOP- GEORGET WITH EMBROIDERY
BOTTOM- SILK STICHED
DUPATTA - ORGENZA EMBROIDERY

- Ⓟ DRY CLEAN ONLY.
- ⊗ DO NOT USE ANY BLEACH OR STAIN REMOVING CHEMICAL.
- ☎ IRON THE FABRIC AT MODERATE TEMPERATURE.





READYMAD
#R-1035-D



TOP- GEORGET WITH EMBROIDERY
BOTTOM- SILK STICHED
DUPATTA - ORGENZA EMBROIDERY

- Ⓟ DRY CLEAN ONLY.
- ⊗ DO NOT USE ANY BLEACH OR STAIN REMOVING CHEMICAL.
- ☎ IRON THE FABRIC AT MODERATE TEMPERATURE.





READYMAD
#R-1035-A

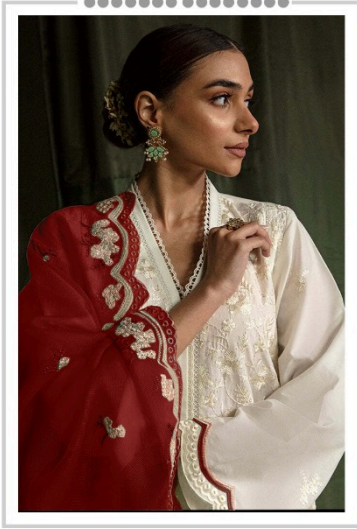


TOP- GEORGET WITH EMBROIDERY
BOTTOM- SILK STICHED
DUPATTA - ORGENZA EMBROIDERY

- Ⓟ DRY CLEAN ONLY.
- ⓧ DO NOT USE ANY BLEACH OR STAIN REMOVING CHEMICAL.
- ☎ IRON THE FABRIC AT MODERATE TEMPERATURE.



Ramsha®
1035-NX



#R-1035-A



#R-1035-B



#R-1035-C



#R-1035-D

Ramsha®
1035-NX



READYMAD
#R-1035-B



TOP- GEORGET WITH EMBROIDERY
BOTTOM- SILK STICHED
DUPATTA - ORGENZA EMBROIDERY

- Ⓟ DRY CLEAN ONLY.
- ⓧ DO NOT USE ANY BLEACH OR STAIN REMOVING CHEMICAL.
- ☎ IRON THE FABRIC AT MODERATE TEMPERATURE.

