

RINAZ[®]
FASHION

D.NO.55001

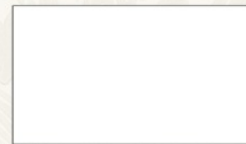


TOP - FOX GEORGETTE
BOTTOM/INNER - HEAVY SHANTUN
DUPATTA - NAZNIN



WASHING INSTRUCTIONS

DO NOT USE ANY TYPE OF BLEACH OR STAIN REMOVING CHEMICALS
BEFORE CUTTING / STITCHING. FABRIC SHOULD BE SOAKED IN WATER
(ALL COMPONENTS SEPARATELY) FOR 15 MINUTES
DO NOT KEEP WET FABRIC IN TWISTED FORM IN ORDER TO AVOID COPY MARKS !
WASH COLOURED AND WHITE FABRICS SEPARATELY
IRON CLOTHES AT MODERATE TEMPERATURE ! DO NOT DRY FABRIC IN DIRECT SUNLIGHT
(EXTRA LACES , HANGING AND ACCESSORIES ARE NOT INCLUDED)







RINAZ[®]
FASHION

D.NO.55003

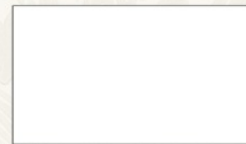


TOP - FOX GEORGETTE
BOTTOM/INNER - HEAVY SHANTUN
DUPATTA - NAZNIN



WASHING INSTRUCTIONS

DO NOT USE ANY TYPE OF BLEACH OR STAIN REMOVING CHEMICALS
BEFORE CUTTING / STITCHING. FABRIC SHOULD BE SOAKED IN WATER
(ALL COMPONENTS SEPARATELY) FOR 15 MINUTES
DO NOT KEEP WET FABRIC IN TWISTED FORM IN ORDER TO AVOID COPY MARKS !
WASH COLOURED AND WHITE FABRICS SEPARATELY
IRON CLOTHES AT MODERATE TEMPERATURE ! DO NOT DRY FABRIC IN DIRECT SUNLIGHT
(EXTRA LACES , HANGING AND ACCESSORIES ARE NOT INDUDED)



RINAZ[®]
FASHION

D.NO.55002

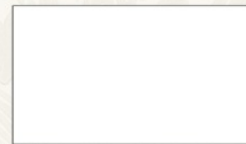


TOP - FOX GEORGETTE
BOTTOM/INNER - HEAVY SHANTUN
DUPATTA - NAZNIN



WASHING INSTRUCTIONS

DO NOT USE ANY TYPE OF BLEACH OR STAIN REMOVING CHEMICALS
BEFORE CUTTING / STITCHING. FABRIC SHOULD BE SOAKED IN WATER
(ALL COMPONENTS SEPARATELY) FOR 15 MINUTES
DO NOT KEEP WET FABRIC IN TWISTED FORM IN ORDER TO AVOID COPY MARKS !
WASH COLOURED AND WHITE FABRICS SEPARATELY
IRON CLOTHES AT MODERATE TEMPERATURE ! DO NOT DRY FABRIC IN DIRECT SUNLIGHT
(EXTRA LACES , HANGING AND ACCESSORIES ARE NOT INDUDED)







RINAZ[®]
FASHION

D.NO.55004

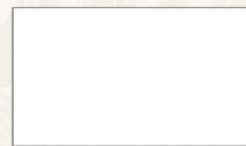


TOP - FOX GEORGETTE
BOTTOM/INNER - HEAVY SHANTUN
DUPATTA - NAZNIN



WASHING INSTRUCTIONS

DO NOT USE ANY TYPE OF BLEACH OR STAIN REMOVING CHEMICALS
BEFORE CUTTING / STITCHING. FABRIC SHOULD BE SOAKED IN WATER
(ALL COMPONENTS SEPARATELY) FOR 15 MINUTES
DO NOT KEEP WET FABRIC IN TWISTED FORM IN ORDER TO AVOID COPY MARKS !
WASH COLOURED AND WHITE FABRICS SEPARATELY
IRON CLOTHES AT MODERATE TEMPERATURE ! DO NOT DRY FABRIC IN DIRECT SUNLIGHT
(EXTRA LACES , HANGING AND ACCESSORIES ARE NOT INDUDED)

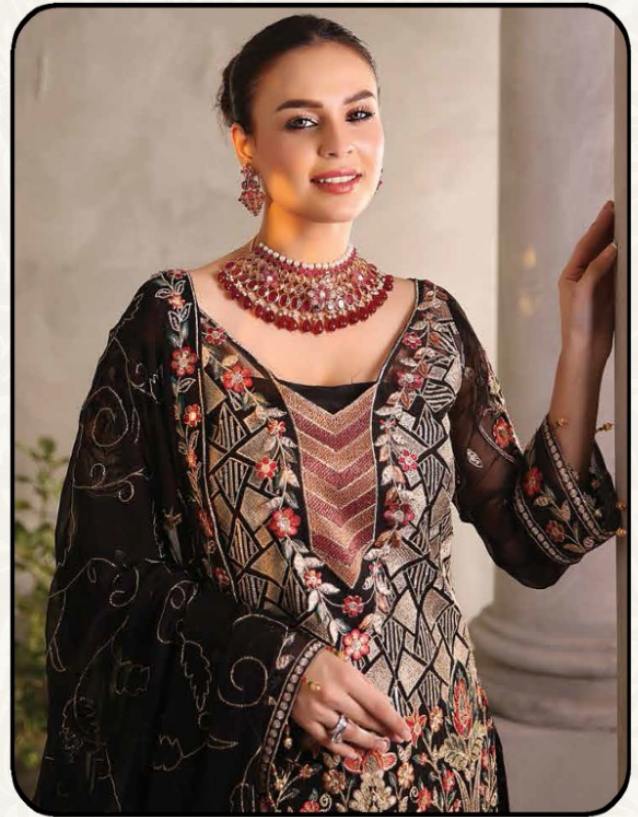




RINAZ[®]
FASHION

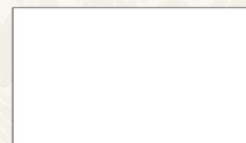
D.NO.55005

TOP - FOX GEORGETTE
BOTTOM/INNER - HEAVY SHANTUN
DUPATTA - NAZNIN



WASHING INSTRUCTIONS

DO NOT USE ANY TYPE OF BLEACH OR STAIN REMOVING CHEMICALS
BEFORE CUTTING / STITCHING. FABRIC SHOULD BE SOAKED IN WATER
(ALL COMPONENTS SEPARATELY) FOR 15 MINUTES
DO NOT KEEP WET FABRIC IN TWISTED FORM IN ORDER TO AVOID COPY MARKS !
WASH COLOURED AND WHITE FABRICS SEPARATELY
IRON CLOTHES AT MODERATE TEMPERATURE ! DO NOT DRY FABRIC IN DIRECT SUNLIGHT
(EXTRA LACES , HANGING AND ACCESSORIES ARE NOT INDUDED)





D.No.	TOP	BOTTOM	DUPATTA
55001	FOX GEORGETTE	HEAVY SHANTUN	NAZNIN
55002	FOX GEORGETTE	HEAVY SHANTUN	NAZNIN
55003	FOX GEORGETTE	HEAVY SHANTUN	NAZNIN
55004	FOX GEORGETTE	HEAVY SHANTUN	NAZNIN
55005	FOX GEORGETTE	HEAVY SHANTUN	NAZNIN

***NOTE : Rate 1350 + GST Extra.**

MARYAM'S

GOLD VOL-21



D.NO.55001



D.NO.55002



D.NO.55003



RINAZ[®]
FASHION



D.NO.55004



D.NO.55005



RINAZ[®]
FASHION

MARYAM'S

GOLD VOL-21