



ALK[®]

AL KHUSHBU[®]

ZAHRA RUBAB
VOL-3



**BACK
WORK**



ALK
AL KHUSHBU

ALK-6011

TOP Heavy Embroidery (cut 2.50)

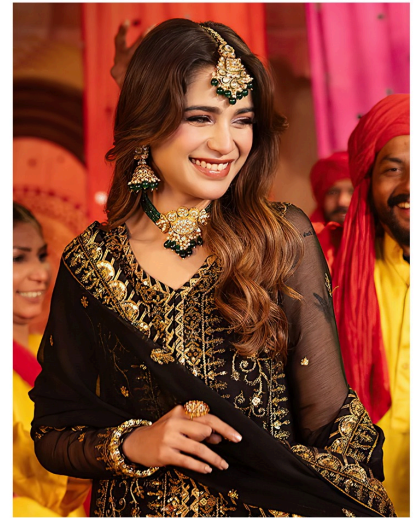
SHIRT/BLAZER Cut Embroidery (cut 6.21)

SAREE/SET Heavy Embroidery (cut 2.48)

CARE INSTRUCTIONS

- 1. Do not wash in machine
- 2. Do not use bleach
- 3. Do not use iron
- 4. Do not use dry clean





ALK-6010

- TOP** Fox Georgette with Heavy Embroidery (cut 2.50)
- BOTTOM-INNER** Dull Santoon (cut 4.25)
- DUPATTA** Fox Georgette with Heavy Embroidery (cut 2.40)

CARE INSTRUCTIONS

- ☐ Dry clean only
- ⚠ Do not use any bleach or stain removing chemical
- ☐ Iron the fabric at moderate temperature
- ☒ Do not dry fabric in direct sunlight



ALK[®]
AL KHUSHBU[®]

ALK-6011

- TOP** Fox Georgette with Heavy Embroidery (cut 2.50)
- BOTTOM-INNER** Dull Santoon (cut 4.25)
- DUPATTA** Fox Georgette with Heavy Embroidery (cut 2.40)

CARE INSTRUCTIONS

- ☉ Dry clean only
- ⚠ Do not use any bleach or stain removing chemical
- ☐ Iron the fabric at moderate temperature
- ☒ Do not dry fabric in direct sunlight



ALK[®]
AL KHUSHBU[®]

ALK-6009

TOP Fox Georgette with Heavy Embroidery (cut 2.50)
BOTTOM-INNER Dull Santoon (cut 4.25)
DUPATTA Fox Georgette with Heavy Embroidery (cut 2.40)

CARE INSTRUCTIONS

- ☉ Dry clean only
- ⚠ Do not use any bleach or stain removing chemical
- ☐ Iron the fabric at moderate temperature
- ☒ Do not dry fabric in direct sunlight

ZAHRA RUBAB

VOL-3



ALK-6009



ALK-6010



ALK-6011