



DS-167 A

Top- FOX GEORGETTE EMBROIDERY

Bottom/Iner- SANTOON

Dupatta- NAZMEEN EMBROIDERY

WASHING INSTRUCTIONS
DO NOT BLEACH THE FABRIC OR SOAK FOR LONGER PERIODS
DO NOT DRY IN DIRECT SUNLIGHT. SHOULD BE WASHED IN COLD WATER
DO NOT USE HOT IRON. IF PROVISIONAL PRESSING IS REQUIRED
WASH-DRIED AND WASHED FABRICS
WASHING INSTRUCTIONS SHOULD BE FOLLOWED BY THE CUSTOMER
IF THE FABRIC IS NOT WASHED AS PER INSTRUCTIONS



DS-169 C

Top- HEAVY ORGANZA EMBROIDERY WITH HAND WORK

Bottom/Inner- SANTOON

Dupatta- HEAVY ORGANZA EMBROIDERY

WASHING INSTRUCTIONS
 DO NOT DRY AT THE END OF DRY CLEANING OR HANG
 BEFORE DRYING OR HANGING, SHOULD BE STORED IN SHADY PLACE
 ALL COMPONENTS SHOULD BE STORED SEPARATELY
 DO NOT USE HOT IRON OR PRESSURE IN DRYING OR HANGING
 IRON-STEAM AND WET PRESSURE SHOULD
 BE AVOIDED AT ALL TIMES. TEMPERATURE SHOULD NOT EXCEED 150°C. DRY CLEANING
 IS THE BEST OPTION FOR THIS FABRIC.



DS-169 A

Top- HEAVY ORGANZA EMBROIDERY WITH HAND WORK

Bottom/Inner- SANTOON

Dupatta- HEAVY ORGANZA EMBROIDERY

WASHING INSTRUCTIONS
 DO NOT DRY AT THE END OF DRYING OR IRONING OR HANGING
 BEFORE DRYING OR IRONING, SHOULD BE SOAKED IN COLD WATER
 ALL COMPONENTS SHOULD BE WASHED SEPARATELY
 DO NOT USE HOT WATER IN WASHING OR DRYING OR IRONING
 WASH-ABLE AND WASH-PROOF FABRICS
 WASHING INSTRUCTIONS SHOULD BE FOLLOWED BY THE CUSTOMER
 (IF ANY) AND WASHING INSTRUCTIONS ARE NOT INCLUDED



DS-169 B

Top- HEAVY ORGANZA EMBROIDERY WITH HAND WORK

Bottom/Inner- SANTOON

Dupatta- HEAVY ORGANZA EMBROIDERY

WASHING INSTRUCTIONS
DO NOT DRY IN THE SUN OR IN A DRYING MACHINE
DO NOT USE BLEACH OR HARSH SOAP. WASH IN COLD OR WARM WATER
DO NOT IRON. IF NECESSARY, IRON ON THE REVERSE SIDE OF FABRIC
DO NOT USE HOT IRON. IF NECESSARY, IRON ON THE REVERSE SIDE OF FABRIC
DO NOT USE STEAM. IF NECESSARY, USE STEAM ON THE REVERSE SIDE OF FABRIC
DO NOT USE DRY CLEANING. IF NECESSARY, USE DRY CLEANING ON THE REVERSE SIDE OF FABRIC



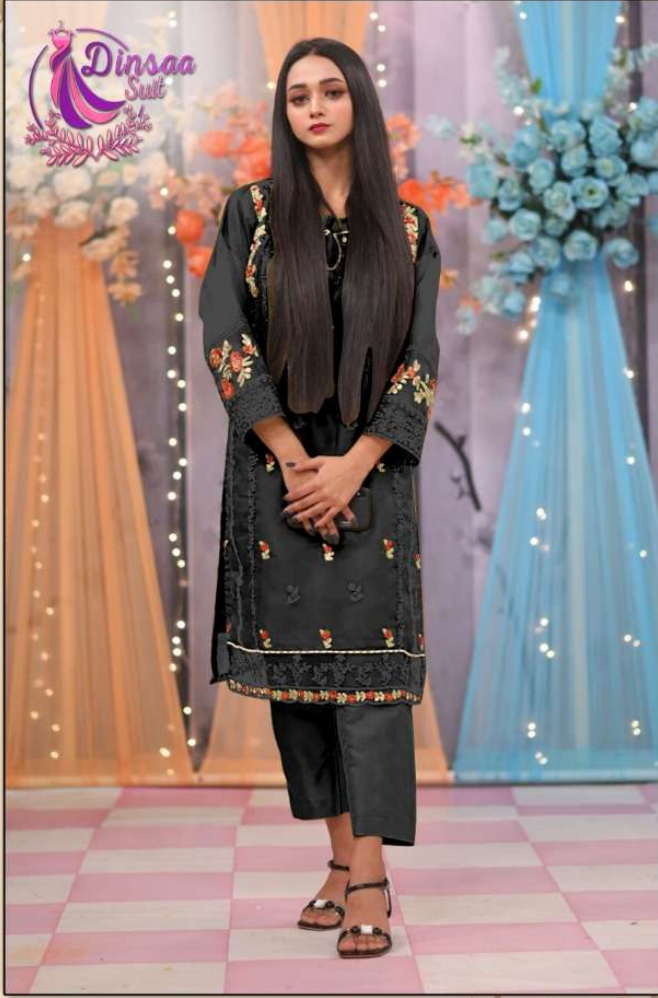
DS-169 C

Top- HEAVY ORGANZA EMBROIDERY WITH HAND WORK

Bottom/Inner- SANTOON

Dupatta- HEAVY ORGANZA EMBROIDERY

WASHING INSTRUCTIONS
 DO NOT DRY AT THE END OF DRYING OR IRONING OR HANGING
 BEFORE DRYING OR IRONING, SHOULD BE SOAKED IN COLD WATER
 ALL COMPONENTS SHOULD BE WASHED SEPARATELY
 DO NOT USE HOT WATER IN WASHING OR DRYING OR IRONING
 IRON- COLD AND WET PRESSURE
 WASHING INSTRUCTIONS SHOULD BE FOLLOWED BY THE CUSTOMER
 (IF NOT MENTIONED IN THE INSTRUCTIONS)



DS-169 D

Top- HEAVY ORGANZA EMBROIDERY WITH HAND WORK

Bottom/Inner- SANTOON

Dupatta- HEAVY ORGANZA EMBROIDERY

WASHING INSTRUCTIONS
DO NOT DRY IN THE SUN OR IN A DRYER. WASH IN COLD WATER.
DO NOT USE BLEACH OR HARSH DETERGENTS. WASH IN COLD WATER.
DO NOT IRON. IF NECESSARY, IRON ON THE REVERSE SIDE.
DO NOT USE DRY CLEANING. WASH IN COLD WATER.
DO NOT USE DRY CLEANING. WASH IN COLD WATER.



DS-169-A



DS-169-B



DS-169-C



DS-169-D



DS-167 A

Top- FOX GEORGETTE EMBROIDERY
Bottom/Iner- SANTOON
Dupatta- NAZMEEN EMBROIDERY

WASHING INSTRUCTIONS
DO NOT USE ANY TYPE OF BLEACH OR SPAN REMOVING CHEMICALS
BEFORE CUTTING STITCHING FABRIC SHOULD BE SOAKED IN WATER
FOR 15 MINUTES
DO NOT WASH WITH FABRIC IN TINTED FROM IN ORDER TO AVOID COLOURING
WASH COLOURED AND WHITE FABRICS SEPARATELY
IRON CLOTHES AT MEDIUM TEMPERATURE DO NOT DRY FABRIC IN DIRECT SUNLIGHT
(EYES, LACES, HANGINGS AND ACCESSORIES ARE NOT INCLUDED)