

ZARQASH<sup>TM</sup>  
A BRAND BY KHAJURA

Z-3033-E



**-:TOP:-**

**Organza Embroidered Moti Work  
Unstitched Kameez**

**-:BOTTAM/INNER:-**

**Santoon**

**-:DUPATTA:-**

**Organza Heavy Work Embroidered**

ZARQASH<sup>TM</sup>  
A BRAND BY KHA FIBRA

Z-3033-A



**-:TOP:-**

**Organza Embroidered Moti Work  
Unstitched Kameez**

**-:BOTTAM/INNER:-**

**Santoon**

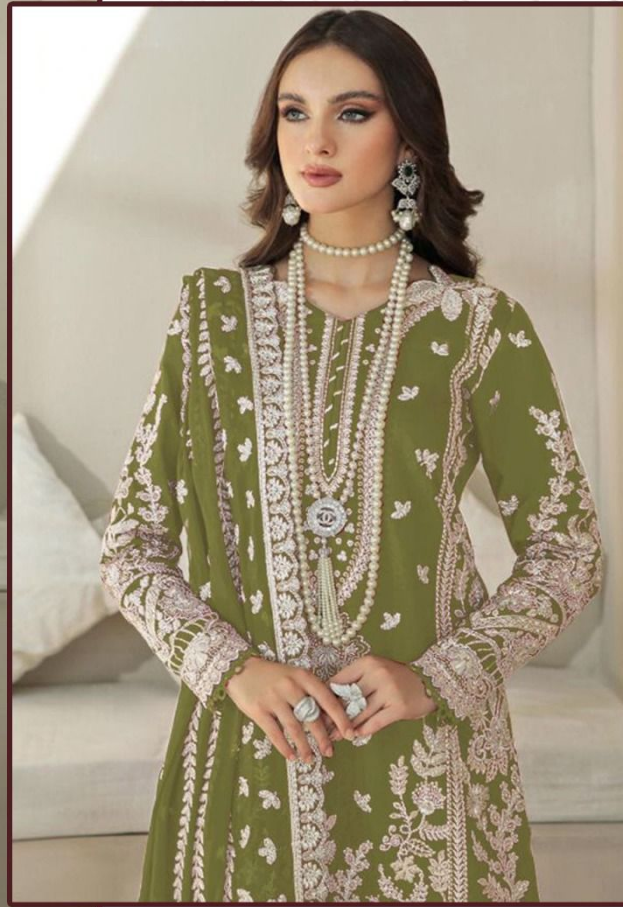
**-:DUPATTA:-**

**Organza Heavy Work Embroidered**



ZARQASH<sup>TM</sup>  
A BRAND BY KHA FERA

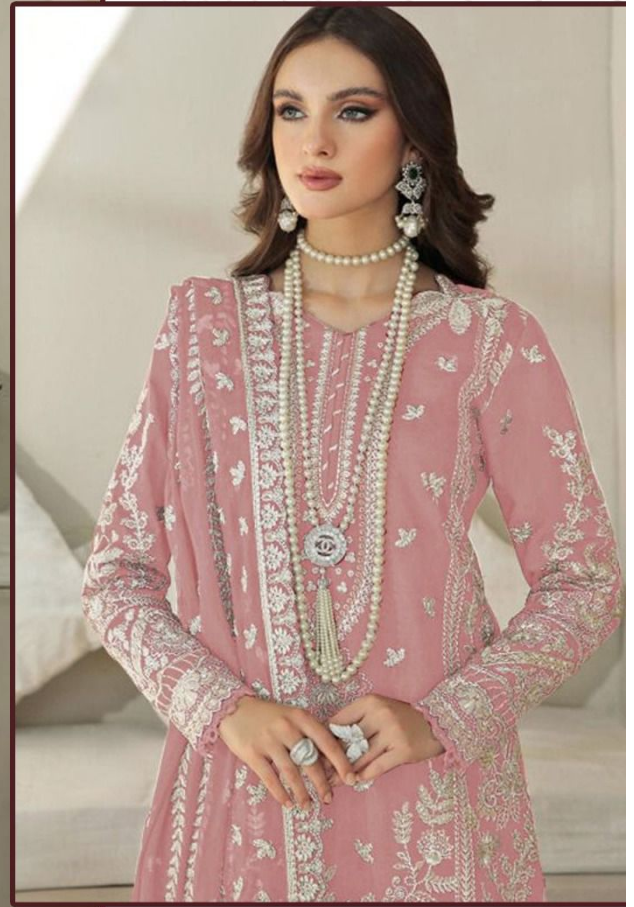
Z-3033-B



**-:TOP:-**  
Organza Embroidered Moti Work  
Unstitched Kameez  
**-:BOTTAM/INNER:-**  
Santoon  
**-:DUPATTA:-**  
Organza Heavy Work Embroidered

ZARQASH<sup>SM</sup>  
A BRAND BY KHAJURA

Z-3033-D



**-:TOP:-**

**Organza Embroidered Moti Work  
Unstitched Kameez**

**-:BOTTAM/INNER:-**

**Santoon**

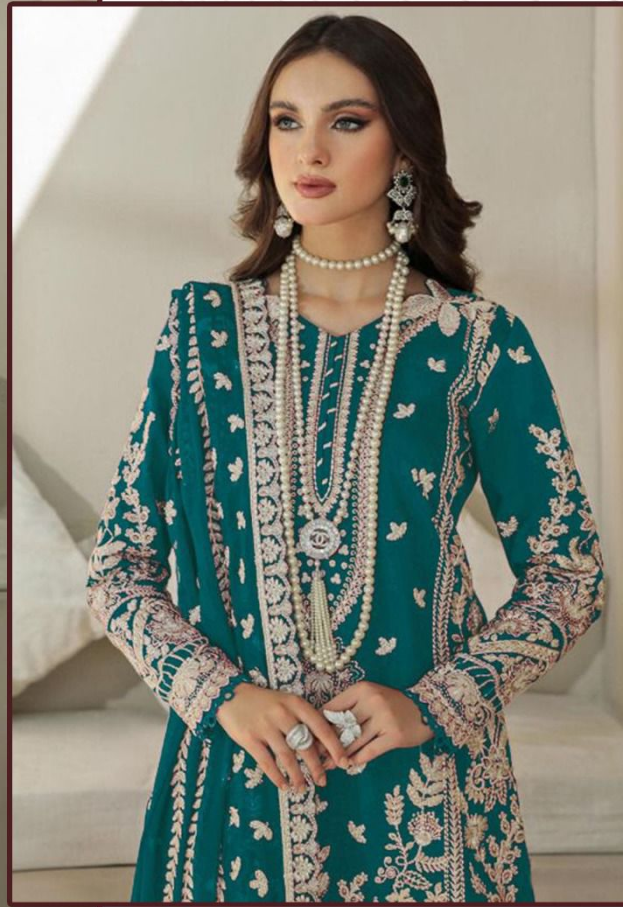
**-:DUPATTA:-**

**Organza Heavy Work Embroidered**



ZARQASH<sup>TM</sup>  
A BRAND BY KHA FIBRA

Z-3033-C



**-:TOP:-**

Organza Embroidered Moti Work  
Unstitched Kameez

**-:BOTTAM/INNER:-**

Santoon

**-:DUPATTA:-**

Organza Heavy Work Embroidered





ZARQASH

Z-3033-D

TOP:-  
Organza Embroidered Matli Work  
Unstitched Kameez  
BOTTAMINNER:-  
Santoon  
DUPATTA:-  
za Heavy Work Embroidered









**ZARQASH**  
Z-3033-C

TOP: Organza Embroidered Mat Work  
Unstitched Kameez - BOTTLENECK - SARIKUM  
DUPATTA: Mat Work Embroidered





**TIKONA**  
Z-3033-B

-TOP:-  
Organza Embroidered Moti Work  
-Cuttibed Kammeer-  
-BOTTAMINNEER:-  
Santoon  
-DUPATTA:-  
Organza Heavy Work Embroidered





ZARQASH

Z-3033-A

TOP - Embroidered Multi Work

Sleeves - Embroidered